



Generalitat de Catalunya
Government
of Catalonia



Ports
de la Generalitat

PORTS OF CATALONIA

CARGO_

01



**_A NEW HORIZON
FOR YOUR GOODS**

P_03

PORTS OF CATALONIA
CARGO_

_WELCOME TO THE COMMERCIAL PORTS OF CATALONIA

Ports de la Generalitat is a public-sector company affiliated to the Department of Territory and Sustainability of the Generalitat of Catalonia.

Ports de la Generalitat is in charge of running all non concessioned fishing harbours, marinas and cargo ports directly managed by the Catalan government. This is a total of 26 facilities where among them the cargo ports of **Palamós (Girona), Vilanova i la Geltrú (Barcelona), Sant Carles de la Ràpita and the port of Alcanar (Tarragona)** are part of it.

All the commercial ports of **Ports of Catalonia** are recognised by ISO 9001, 1400 and EMAS certification in compliance with ISO Quality system requirements and good environmental practices which certifies the high quality port services from ship to office, in strictly compliance of the ISPS CODE and waste management under MARPOL auspices.



_5 REASONS TO CHOOSE THE PORTS OF CATALONIA

- Terminals specialized in general cargo, bulk and project cargo
- Flexibility and highly client orientation
- Intermodal connectivity
- Low rate of incidences
- Terminals operated by long experienced shipping companies



TYPES OF CARGO

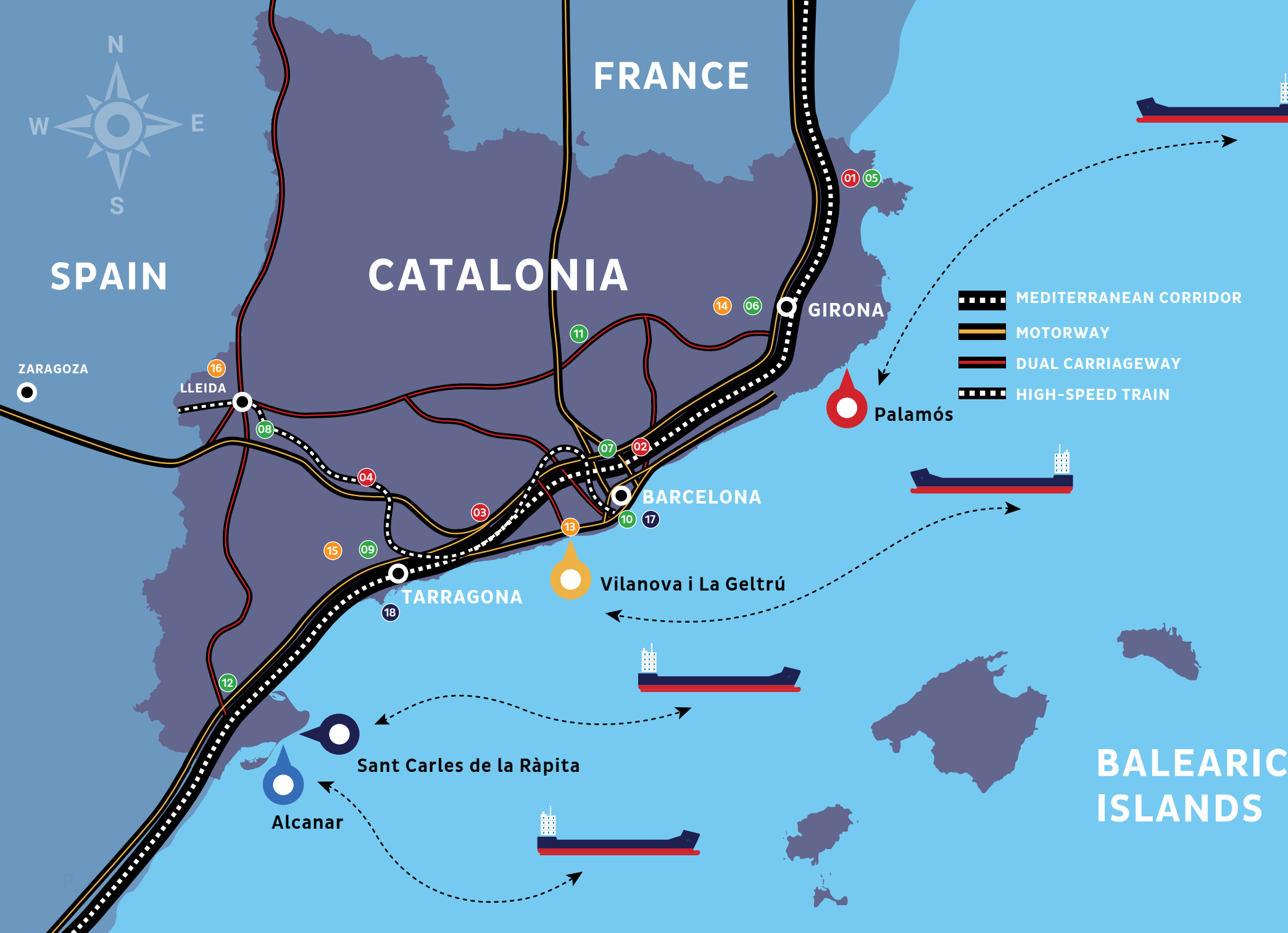
The main commercial activity in Catalan Ports are based on the following products

- SALT
- WOOD PULP
- MINERALS & STEEL PRODUCTS
- CIMENT
- GENERAL CARGO USING AN OFFSHORE PLATFORM



- Palamós
- Sant Carles de la Ràpita
- Vilanova i La Geltrú
- Alcanar
- UE Corridors

INTERMODAL CONNECTIONS (CIM)



- MEDITERRANEAN CORRIDOR
- MOTORWAY
- DUAL CARRIAGEWAY
- HIGH-SPEED TRAIN



INTERMODAL LOGISTICS PLATFORMS

- 01 LOGIS Intermodal el Far d'Empordà-Vilamallà
- 02 Terminal Logística Intermodal la Llagosta
- 03 LOGIS Intermodal Penedès
- 04 LOGIS Intermodal Montblanc



LOGISTICS PLATFORMS

- 05 LOGIS Empordà
- 06 CIM Selva
- 07 CIM Vallès
- 08 CIM Lleida
- 09 CIM el Camp
- 10 ZAL
- 11 LOGIS Bages
- 12 LOGIS Ebre-Aldea



AIRPORT

- 13 Barcelona
- 14 Girona Costa-Brava
- 15 Reus
- 16 Lleida-Alguaire



PORTS

- 17 Barcelona
- 18 Tarragona
- Palamós
- Vilanova i La Geltrú
- Sant Carles de la Ràpita
- Alcanar

- MEDITERRANEAN CORRIDOR
- MOTORWAY
- DUAL CARRIAGEWAY
- HIGH-SPEED TRAIN

BALEARIC ISLANDS

01 PALAMÓS PORT

The Port of Palamós is located in an important fishing and trading town called Palamós, which enjoys a privileged location midway between the Port of Barcelona and that of Marseilles.

The port of Palamós is in one of the deepest bays of the western Mediterranean, sheltered from the strong north winds and safe for all types of vessels.



PRINCIPAL ADVANTAGES

- Easy access for shipping.
- No limits are imposed, by either vessel length or draught.
- Efficient, easy, close-by and flexible.
- High degree of specialisation.
- Warehouses and machinery for loading and unloading, merchant ships managed by specialised logistics operators.



COORDINATES:

I= 41° 50' N L=003° 07' E



WINDS:

North (N) and northwesterly (NW) winds, with predominance of northeasterly (NE) and southwesterly (SW) winds in summer.



ENTRANCE:

320 metres with a depth of 21 metres.



01 PALAMÓS PORT

BASIC INFORMATION



COMMERCIAL DOCK:

Berthing line: 382 m
Width: 43 m
Draught 14 m
Ro-ro ramp: 30 m

STORAGE AREA:

Open-air Storage: 7,500 m²
Warehouses: 2,400 m² / 2,600 m³



OPERATIONAL CAPACITY:

500,000 tonnes per year.



FORELAND:

Brazil, Chile, Canada, Morocco, Turkey, Italy.



HINTERLAND OF THE PORT PALAMÓS:

Girona and South of France to Barcelona.



ROAD CONNECTIONS:

The port of Palamós is connected to the following motorways: AP7, E-15, C-58 and C25, and is 80 km from Perpignan and 105 km from Barcelona.



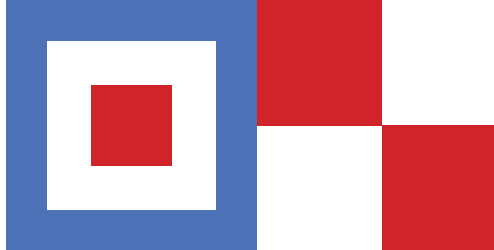
LOGISTICS AREA:

La Selva Logistics Platform: located between the towns of Vilobí d'Onyar and Riudellots de la Selva, at the point where they intersect with the Mediterranean Corridor (AP-7 and A-7) and the Transversal Axis (C-25), and near Girona-Costa Brava airport.



INTERNATIONAL COMPANIES:

- GRIEG STAR SHIPPING AS
- WAGENBORG SHIPPING BV
- EUROSHIPPING SRL
- SPLIETHOFF'S
- FLINTER
- MANAGEMENT BV
- NAVIGASA
- SCHULTE & BRUNS
- BERTLING REEDEREI GMBH FH
- SAGA WELCO AS
- CARISBROOKE SHIPPING
- MAESTRO SHIP MANAGEMENT
- GEARBULK LTD



01 PALAMÓS PORT

CARGO AND VESSEL SERVICES

- Services: Harbourmaster's Office, Customs, Maritime Control Centre.
- Para-customs services.
- Port Authority, Pilots' Corporation of the Port of Palamós, tugboats and mooring services.
- Facilities compliant with the ISPS security code.
- Supplies: water and fuel supply.
- Marpol Waste Management.
- Single data window connecting transport and logistics chains.
- Specialised cargo handling agents and cargo handlers: TOPSA, ESTICAT.
- Shipping agents: Félix Ribera e Hijos S.A. and Matas S.L.

TYPES OF GOODS

The Port of Palamós has specialized operators with knowledge and experience in the handling of cargo and bulk products, such as:

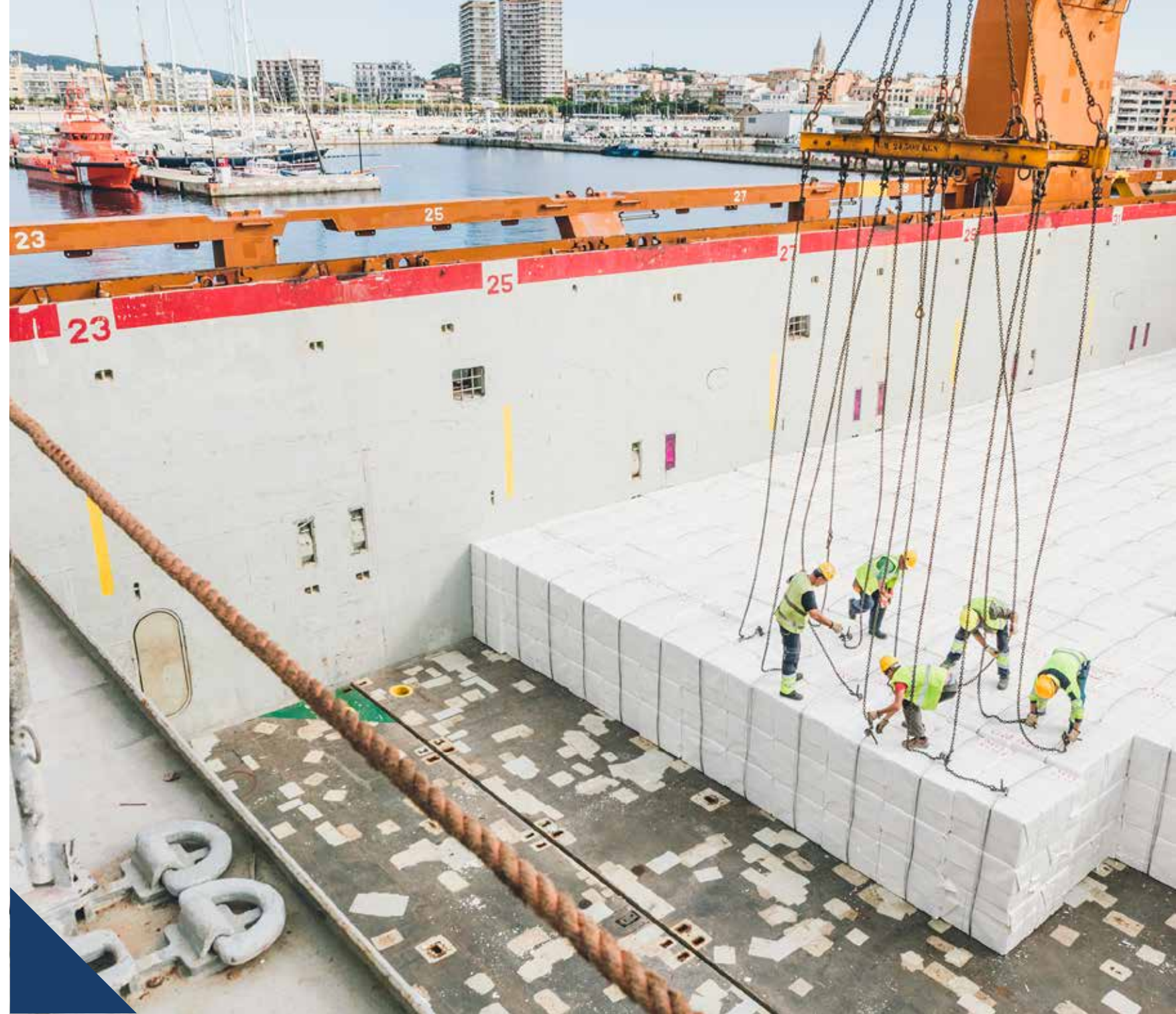
- WOOD
- STEEL PRODUCTS
- CEMENT
- MINERALS
- PROJECT CARGO
- WOOD: WOOD PULP, WOODCHIPS, SAWDUST, CHIPBOARD
- STEEL PRODUCTS: COILS, PROFILES, WIRE RODS

255.288
Tonnes
Per Year

CONTACT AT THE PORT DE PALAMÓS

Office: s/n. 17230 Palamós.

Tel. +34 972 314 525. port.palamos@gencat.cat





_ESTEVEDORES

PORT OF PALAMÓS

TOPSA

Placa Catifa 3, 17230 Palamós
Tel. +34 972 314554 +34 972 314481
info@fribera.es www.fribera.es
matas@matassl.com www.matassl.com

PORT OF VILANOVA I LA GELTRÚ

ESTIVILA (ESTIBAS VILANOVA S.L.)

c/Muelle comercial s/n, 08800 Vilanova i la Geltrú
Telf: +34 93 810 00 80
Luis.lopez@jmestrevilanova.es, jrmacia@jmestrevilanova.es
www.vilanovaport.com

SAMMER, MANIPULADORA DE MERCANCÍAS S.L.

Muelle Príncipe de España
Edificio TERCAT - 3a planta, 08039 BARCELONA
Tel: 93 298 64 00. grupomestre@grupomestre.com

PORT OF SANT CARLES RÀPITA

T.C. VIRSA

c. Vista Alegre, 34 baixos esq. 43540 Sant Carles de la Ràpita
Tel. 977 740 011. Fax 977 741 502
info@tcvirsa.com www.tcvirsa.com

PORT OF ALCANAR

BERGÉ MARÍTIMA

c. Vista Alegre, 28 entresòl, s/n 43540 Sant Carles de la Ràpita
Tel. 977 740 050. Fax 977 742 368
consignacion.aca@berge-m.es www.berge-m.es



PORTS OF CATALONIA



PORTS OF CATALONIA
CARGO_



MORE INFO:
Tel: +34 932 060 930
ports.generalitat@gencat.cat
ports.gencat.cat



Generalitat de Catalunya
Government
of Catalonia